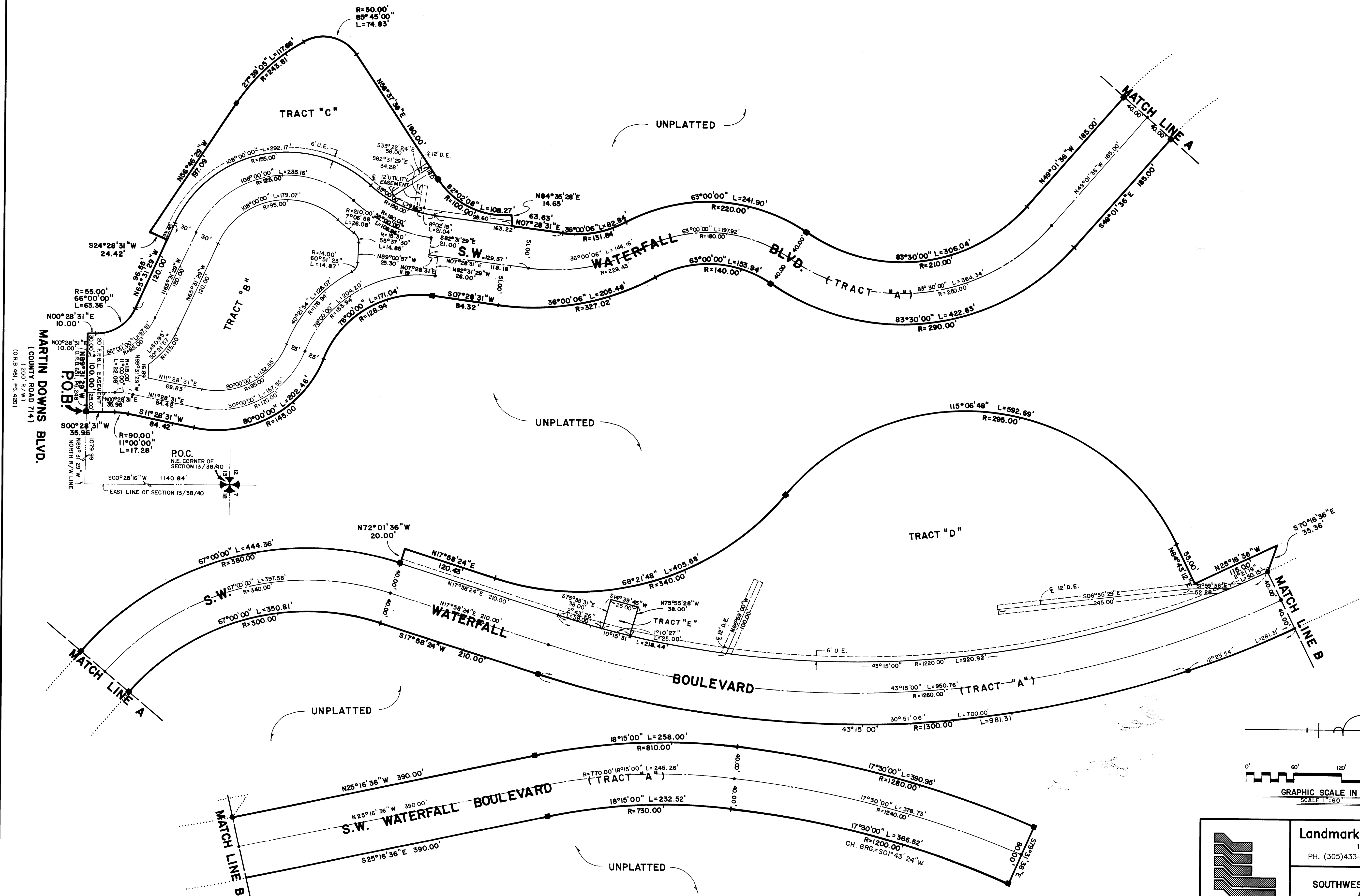


A PLAT OF SOUTHWEST WATERFALL BOULEVARD AT THE MEADOWS

BEING PLAT NO. 41 OF MARTIN DOWNS, A P.U.D.
LYING IN SECTIONS 12 AND 13, TOWNSHIP 38 SOUTH, RANGE 40 EAST
MARTIN COUNTY, FLORIDA
SHEET 2 OF 2 JANUARY, 1988

I, MARSHA STILLER, CLERK OF THE CIRCUIT COURT OF MARTIN COUNTY, FLORIDA, HEREBY CERTIFY THAT THIS PLAT WAS FILED FOR RECORD IN PLAT BOOK 11, PAGE 23, MARTIN COUNTY, FLORIDA, PUBLIC RECORDS, THIS DAY OF A.D. 19 .
MARSHA STILLER, CLERK OF CIRCUIT COURT MARTIN COUNTY, FLORIDA
BY: DEPUTY CLERK
FILE NO.



Landmark Surveying & Mapping Inc.
1850 FOREST HILL BOULEVARD
PH. (305)433-5405 SUITE 100 W.P.B. FLORIDA

A PLAT OF
**SOUTHWEST WATERFALL BOULEVARD
AT THE MEADOWS**
A PLANNED UNIT DEVELOPMENT